

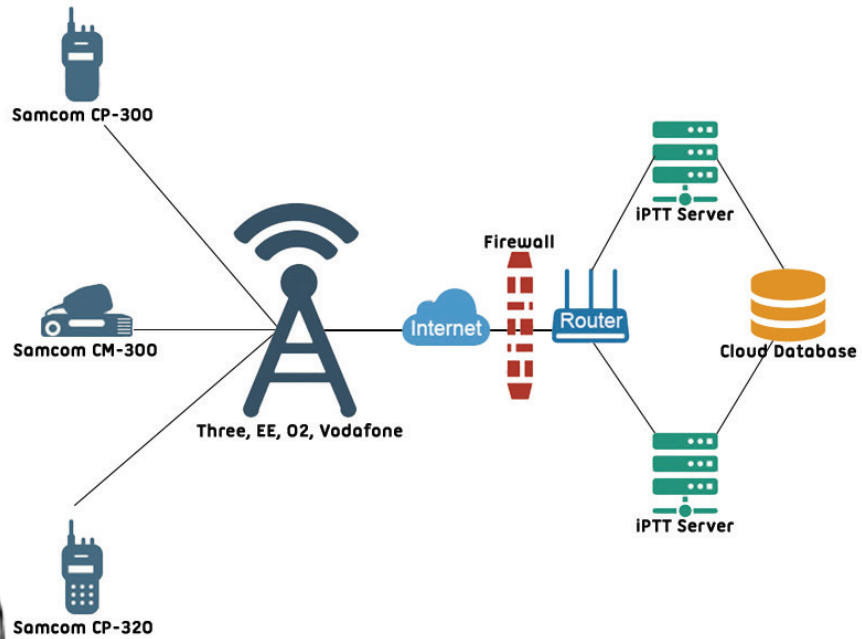


wildtalk.com  
01904 630 686

iptt

# Samcom CP-300

## IPTT POC HANDHELD TERMINAL





iptt

# Samcom CP-300

## APPLICATION

For ultra long range or management communications such as transportation and logistics, multi-site work, public safety, motorsport rescue, emergency situation command, security, festivals & events, cycle races and private ambulance.

## MAIN FEATURES

- IP55 rating dust and splash protection
- Robust, rugged and heavy-duty design
- GSM 900/1800MHz, WCDMA 900/2100MHz
- Crisp, clear and high quality sound
- 2800mAh high capacity Li-ion battery pack
- Voice annunciation
- Low battery alert
- Group call & private call
- Contact list
- Time-out timer
- GPS as standard

### Durable and Water-resistant

With a polycarbonate housing and aluminium die-cast chassis, the CP-300 is built for greater protection, it offers reliable performance in severe weather and in the harshest environments.

### Easy-To-Use

Thanks to the tough and textured buttons, chunky rotary channel, volume knob and tri-colour status LED. The CP-300 can be used when wearing gloves with ease.

### Crisp and High Quality Sound

1000mW audio power output and unique audio box structure design allow the CP-300 to provide clear crystal audio, it is equipped with a large 40mm speaker offering full range audio output, while tailored response characteristics provide optimum clarity even in noisy environments.

### Compatible Accessories

Compatible with existing K-1 two pin fitment accessories. See [www.iptt.co.uk](http://www.iptt.co.uk) for a list of audio and power accessories.

## SPECIFICATIONS

Public Network System  
Frequency Range  
Battery Type  
Power Voltage Range  
Temperature Range  
Weight  
Dimensions(H×W×D)

GSM/WCDMA  
GSM: 900/1800MHz, WCDMA: 900/2100MHz  
Lithium-ion, 2800mAh  
7.4V DC±20%  
-20c ~ +55c  
250g With antenna & battery  
134×57×35mm



Antenna



Battery Pack



Charger



AC Adapter



Belt Clip